

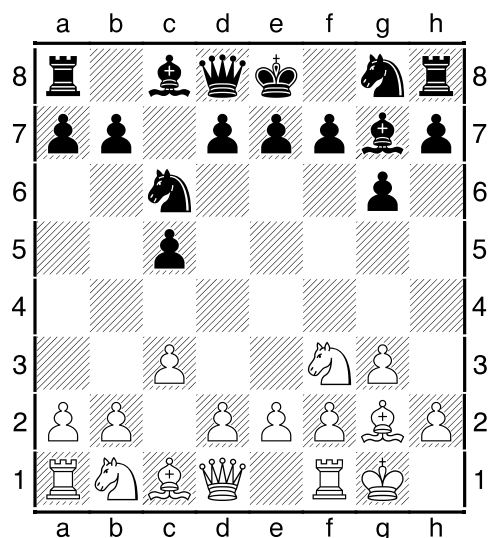
**(1) Damljanovic, Branko (2550) – Marjanovic, Slavoljub (2445) [A08]**

c3,d4 versus c4,d5 Cetinje (8), 1993

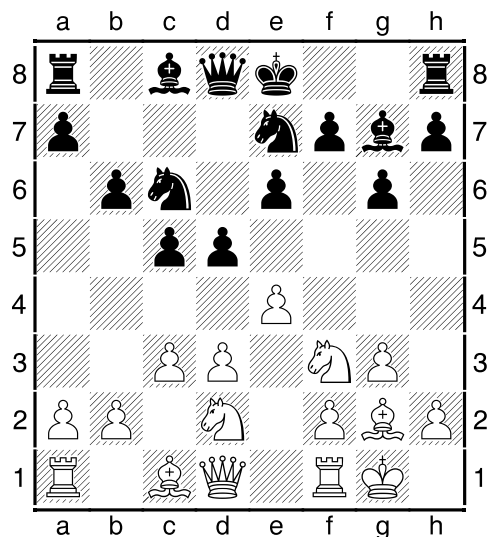
[ICS Strategy – Static center]

[STATIC CENTER In the positions characterized by a blocked pawn structure in the center and the presence of one open or half-open file the fight will take place around the center of the board. Usually each opponent occupies one central square (due to the pawn pairs d4-d5 or e4-e5), so who manages to control (or to occupy) the other 2 squares will have the upper hand. THE ACTIVE SIDE will try to centralize the pieces (in order to control maximum number of squares), then to start a wing attack: – against the enemy king by a piece attack supported by the pawns (by transposition, positions with closed center or mobile center can arise) – on the queen side by a pawn attack (even a minority attack) in order to open up a file and to penetrate into the enemy's camp. THE DEFENDING SIDE must fight for the central squares and to chase opponent's pieces out. We must stress here that a wing attack can take place to compensate opponent's superiority in the center (due to the stable position in the static center).]

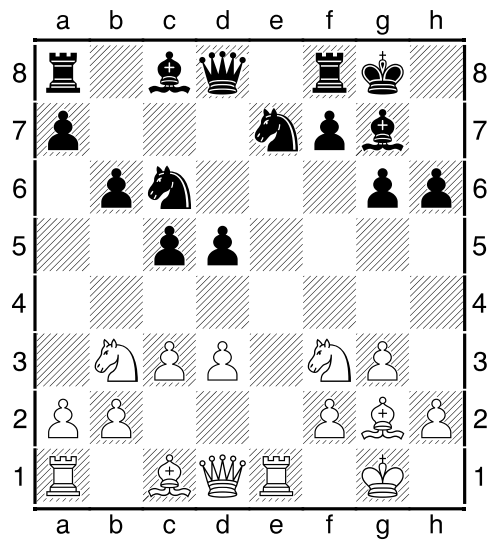
**1.Nf3 c5 2.g3 Nc6 3.Bg2 g6 4.0-0 Bg7**



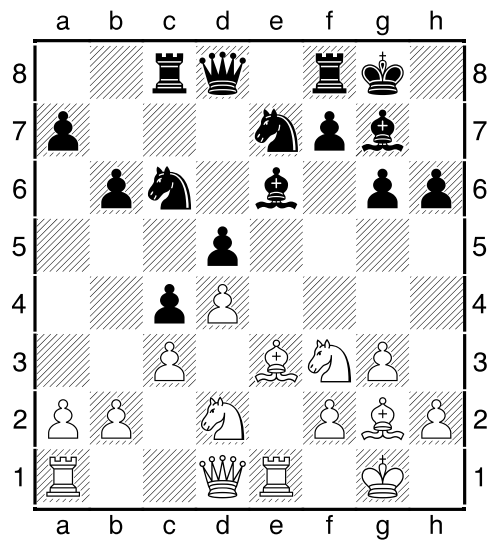
**5.c3 d5 6.d3 e6 7.Nbd2 Nge7 8.e4 b6**



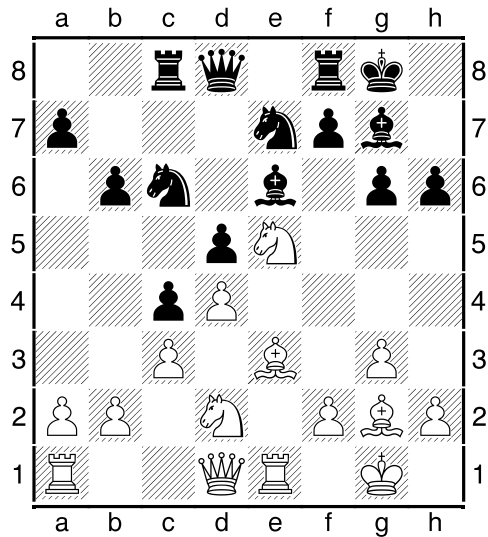
9.Re1 h6 10.exd5 exd5 11.Nb3 0-0



12.Be3 Be6 13.d4 c4 14.Nbd2 Rc8



15. Ne5 b5 [15...Nxe5 16.dxe5 Bxe5 17.Bxh6]



16.f4 Re8 17.Bf2 Qd6 [Diagram # We have a typical position for the "static center". White already installed Ne5 and started a king side pawn advance by f2-f4. In this time, Black prepares a pawn attack with b5-b4 and will try to enter along the "b" file. If White manages to maintain the knight on e5, he will have a better game.]

